

G/On Client Deployment

G/On is designed for de-centralized deployment of client. The idea is to let users themselves do the deployment. As the client is available in two versions (The G/On USB and the G/On Desktop) the deployment will be different depending on the version of the client.

This document describes the preparations required by the IT-Admin necessary to perform the deployment and it gives a guide to the users on how to install the client.

G/On USB Deployment

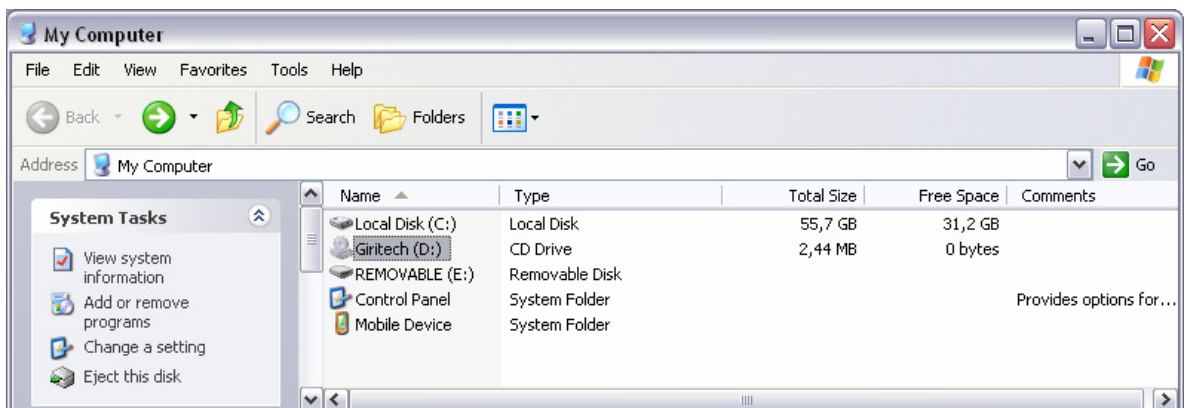
1. IT-Admin preparation

- a. IT Admin downloads to the G/On Server the **serials.dat** file provided by Giritech (along with the USB keys). Use G/On Admin to adopt the file with all the key numbers. The G/On Server has now pre-adopted all the keys.
- b. Make sure the following settings are selected on the G/On Server (using the User Directory Tab, Validation Settings in G/On Builder)
 - i. **Check** the box: "EDC's must be adopted to access the system"
 - ii. **Check** the box: "Allow Access as default rule set action instead of deny..."
- c. IT Admin gives all G/On users a G/On USB key. Either by physically handing out the key or by sending the key by internal mail or US PO Snail Mail.
- d. IT Admin sends an email to G/On users with an attached zip-file containing the **identity** file from the G/On Server

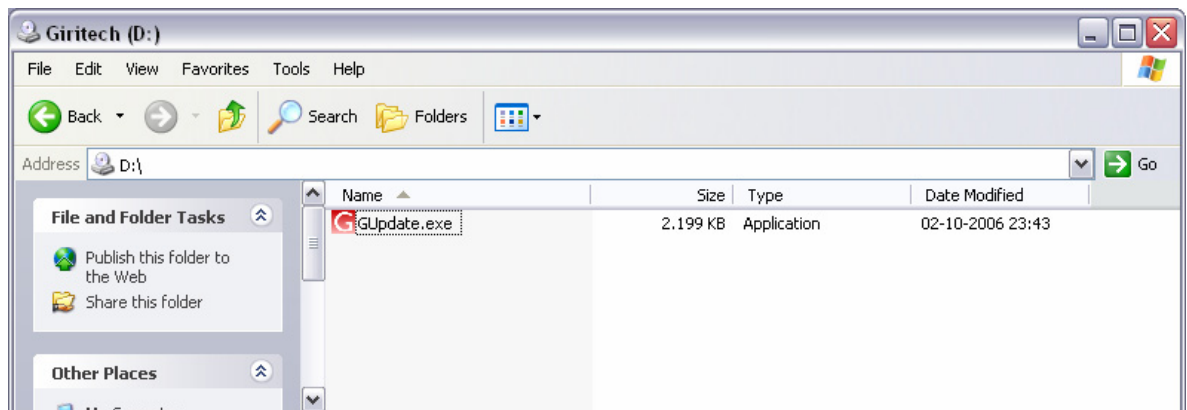
2. User's Guide:

To be able to deploy the G/On USB key, you **must** have **local admin** rights on the machine you intend to use:

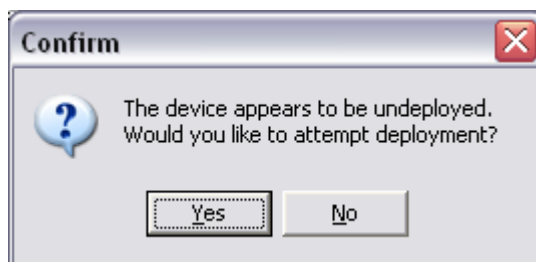
- a. Insert the G/On USB Key and use Start + Open, Start + Explore, or Start + My Computer to navigate to the "My Computer" view. It may look like this:



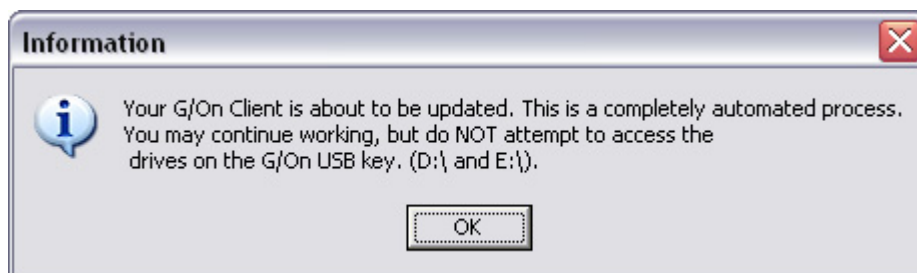
- b. Open the attached zip-file from the mail from IT-Admin and Copy & Paste the **identity** file to the **REMOVABLE** partition (drive E: in the example above) of the USB Key.
- c. Double Click on the Giritech CD partition (drive D: in the example above). The file **Gupdate.exe** will now appear:



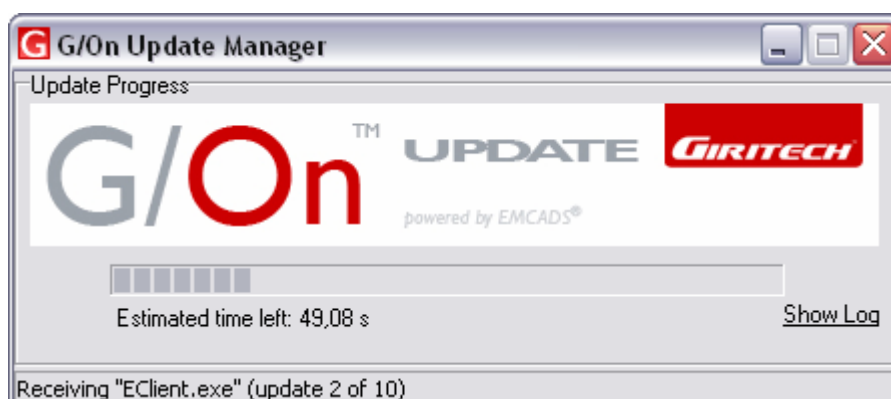
- d. Launch the GUpdate program by Double Clicking on the GUpdate.exe. Answer "Yes" to the following question:



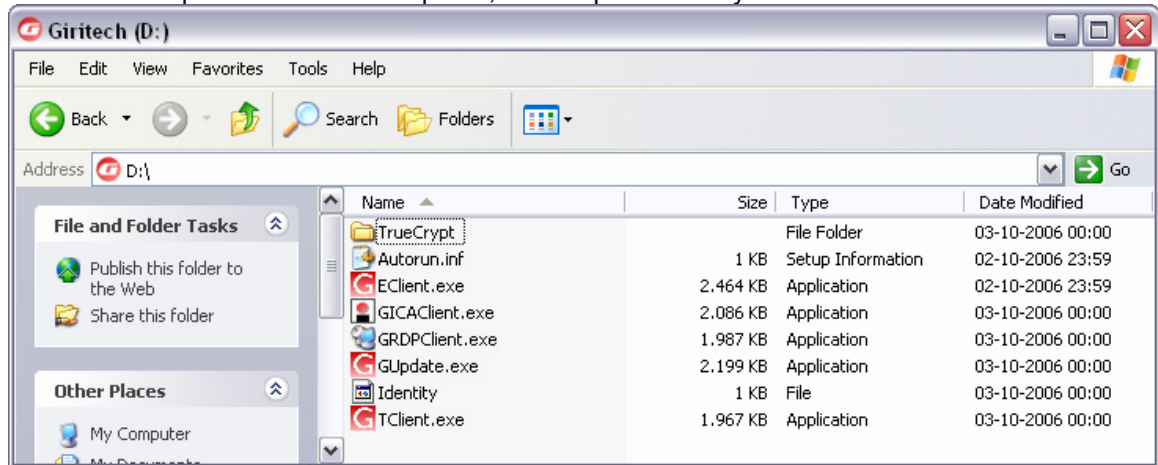
- e. And Press "OK" on this dialog:



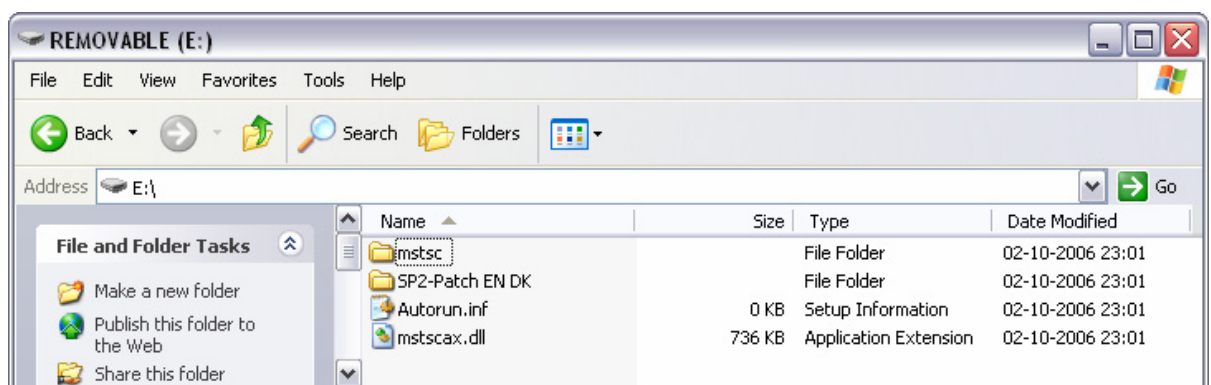
- f. You will now see a progress bar...



- g. Please **DO NOT** remove the USB key during this operation
- h. The update process will first update the CD-partition and then subsequently it will update the REMOVABLE partition. After the update, the CD partition may look like this:



- i. And the REMOVABLE partition may look like this:



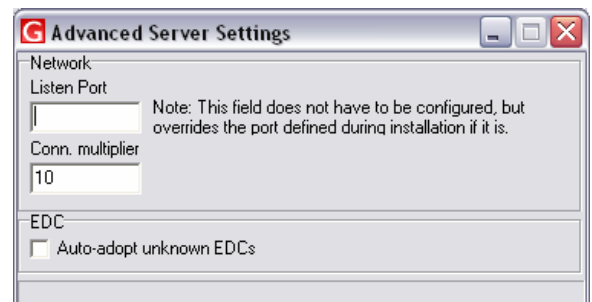
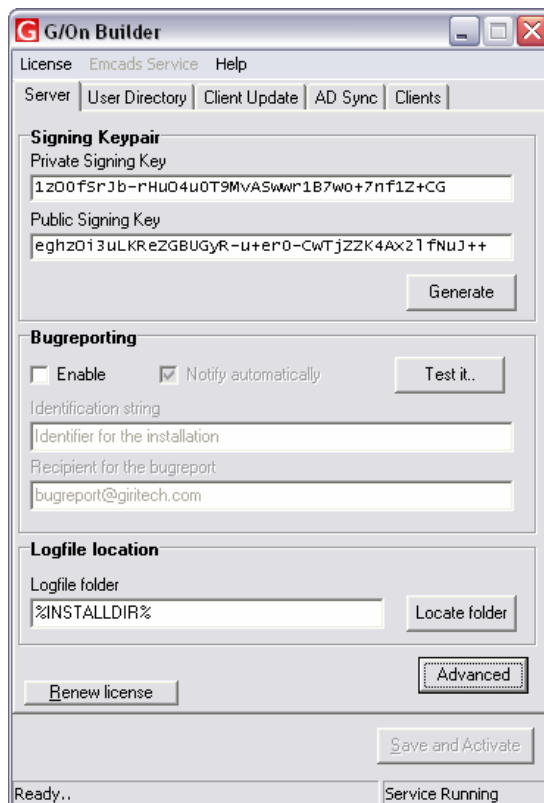
- j. The G/On USB key is now ready to be use.
- k. Pull out the key and insert it again. Connection will be auto-launched.

G/On Desktop Deployment

1. IT-Admin preparation

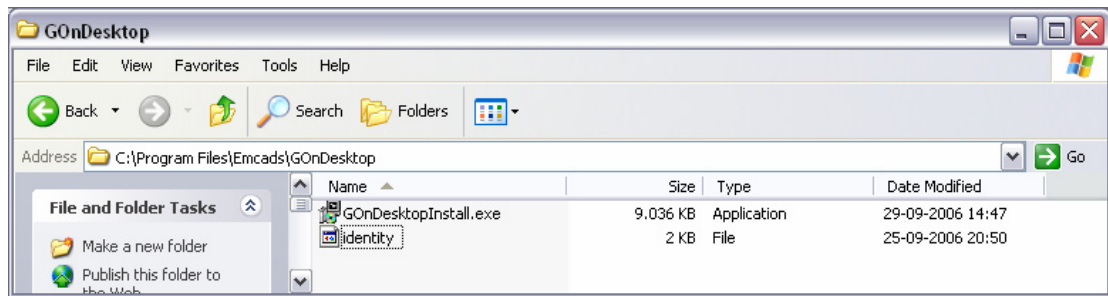
- a. For **security** reasons, G/On Desktop requires all PC's using G/On to be manually adopted by IT-Admin on the G/On Server using the G/On Admin tool.

However, if you are doing a mass-deployment of G/On Desktop to several hundred or thousands of users you do have an option to let the G/On Server automatically adopt any PC that has been given the identity file and consequently has the ability to connect to the G/On Server. Remember, UserID and Password is still required to access G/On. In G/On Builder select the option "Advanced" on the Server Tab. **Check** the box for "Auto-adopt unknown EDC's". **NOTICE:** You should **ALWAYS** turn off this option again after your users have connected to G/On. You may want to require your users to connect within a day, a couple of days, a week or two weeks depending on the scale of the deployment. After this period, you should turn off auto-adopt and manually adopt each PC that connects to the G/On Server. **DO NOT LEAVE THIS OPTION ON BEYOND A RESONALBE DEPLOYMENT PERIOD.**

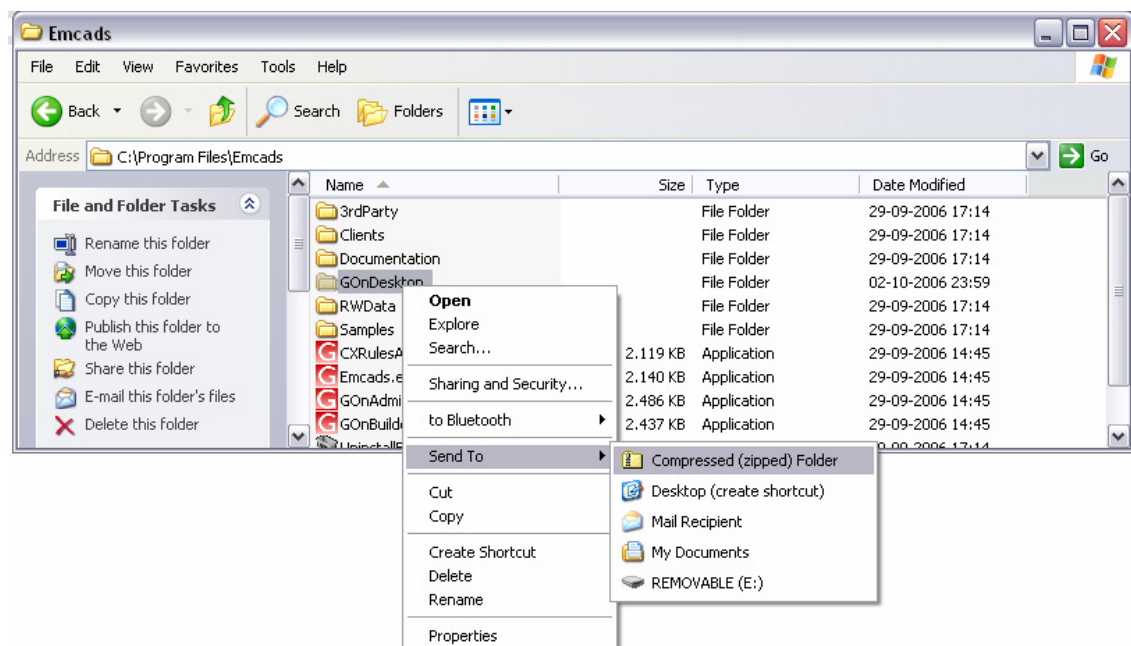


- b. Make sure the During the deployment process it is recommended that the following settings are selected on the G/On Server (using G/On Builder)
 - i. **Check** the box for "EDC's must be adopted to access system"
 - ii. **Check** the box: "Allow Access as default rule set action instead of deny..."
- c. On the G/On Server, navigate to the folder (/assuming the G/On Server is installed in the default location, otherwise navigate to the folder where you installed the G/On Server):
C:\Program Files\Emcad\GOnDesktop

This folder should contain two files:



- d. Navigate up one level and right click on the Mouse positioned on the GOnDesktop folder. Select the option Send To Compressed (zipped) Folder.



- e. As an attachment, email this zipped folder to all G/On Desktop users.

2. User's Guide – G/On Desktop Installation:

- Open the email from your IT-Admin containing the G/On Desktop program. Open the attachment called GOnDesktop.zip
- Open the folder GOnDesktop
- Double Click on the file GOnDesktopInstall.exe
- Follow the directions for the installation
- When installation is completed a new program menu option has been added to your Program Menu.
- To Start G/On, select Programs, G/On Desktop, Client.

Notice: You may be asked by your IT-Admin to run Programs, G/On Desktop, Update before you start the client the very first time.

Alternative Deployment of the G/On Desktop

Download from Web:

IT-Admin preparation

Rather than emailing the GOnDesktop.zip file prepared by the IT-Admin above, IT-Admin can set up a website where users can download the GOnDesktop.zip file. This approach avoids emailing an approx 9MB file to users around the world.

After you have set up the website, send a mail to all G/On Desktop users with instructions and a URL where they can go to get the download.

The instruction for the users is similar to the instructions given above.

User's Guide – G/On Desktop Installation:

- a. Open the email from your IT-Admin containing the link to the G/On Desktop download.
- b. Save the download file to your PC's disk
- c. After the download, open the file GOnDesktop.zip
- d. Open the folder GOnDesktop
- e. Double Click on the file GOnDesktopInstall.exe
- f. Follow the directions for the installation
- g. When installation is completed a new program menu option has been added to your Program Menu.
- h. To Start G/On, select Programs, G/On Desktop, Client.

Notice: You may be asked by your IT-Admin to run Programs, G/On Desktop, Update before you start the client the very first time.